



THE UNIVERSITY
of ADELAIDE

Welcome talk 2016

CORINNA VAN DEN HEUVEL / KATHY GATFORD

CRICOS PROVIDER 00123M

Bachelor of Health Sciences
Bachelor of Health Sciences (Advanced)

adelaide.edu.au

seek LIGHT

**WELCOME &
CONGRATULATIONS!**

Meet your program
coordinators.....

BHlthSc 1993



Pathology and Neuroscience

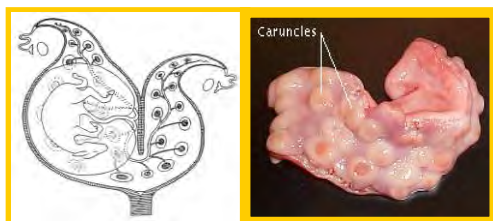




Research Leader – Early Origins of Health & Disease

Studies in experimental models to investigate causality, identify mechanisms and test interventions

IUGR (PLACENTAL RESTRICTION)



with Prof Julie Owens, Prof Glenn McConell (VU), Dr Rob Bischof (Monash)

Interventions:

- Pregnancy or after
- Nutrition; Pharmacological; Exercise; When to stop shift work

MODERATE PREMATURE BIRTH



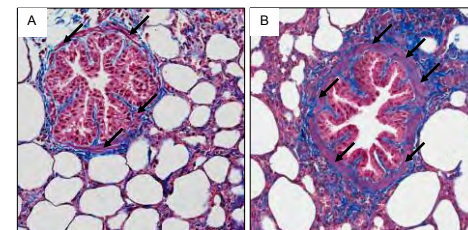
with A/Prof Jane Black, Dr Rob de Matteo (Monash)

MATERNAL SHIFT WORK



with Prof David Kennaway, Dr Tamara Varcoe

MATERNAL ASTHMA



with A/Prof Tim Moss, Dr Rob Bischof *et al.* (Monash)



The Bachelor of Health Sciences

- Offers a broad education for students interested in health
- A focus on human health at the individual and population levels
- Provides a firm foundation for employment in a wide range of health-related areas
- Opportunities for postgraduate study

What do the degrees look like?

- 3 years full-time study (or equivalent part-time)
- 72 units in total across 3 years (24 units per year level)
- Mixture of core courses and electives
- Lots of choices from within health sciences and other faculties
- Advanced degree – research mentors and cohort experiences

Core courses – level 1

- Semester 1:
 - Human Biology 1A (ANAT SC 1102)
 - Public Health 1A (PUB HLTH 1001)
- Semester 2:
 - Choose either:
 - Human Biology 1B (ANAT SC 1103)
 - Or Public Health 1B (PUB HLTH 1002)
 - Or keeps all your options open and do both

Courses / Electives

- Core (compulsory) courses as explained on previous slide. 9 units needed in first year.
- Closed electives are health sciences electives.
- 12 units at each level must be chosen from health sciences.
- The remaining 12 units may be chosen from open electives from other faculties or from health sciences electives.

Broadening electives

- Students must complete 9 units of broadening electives that are chosen from outside of their major area of study.
- **Most students choose to undertake their broadening in first year.

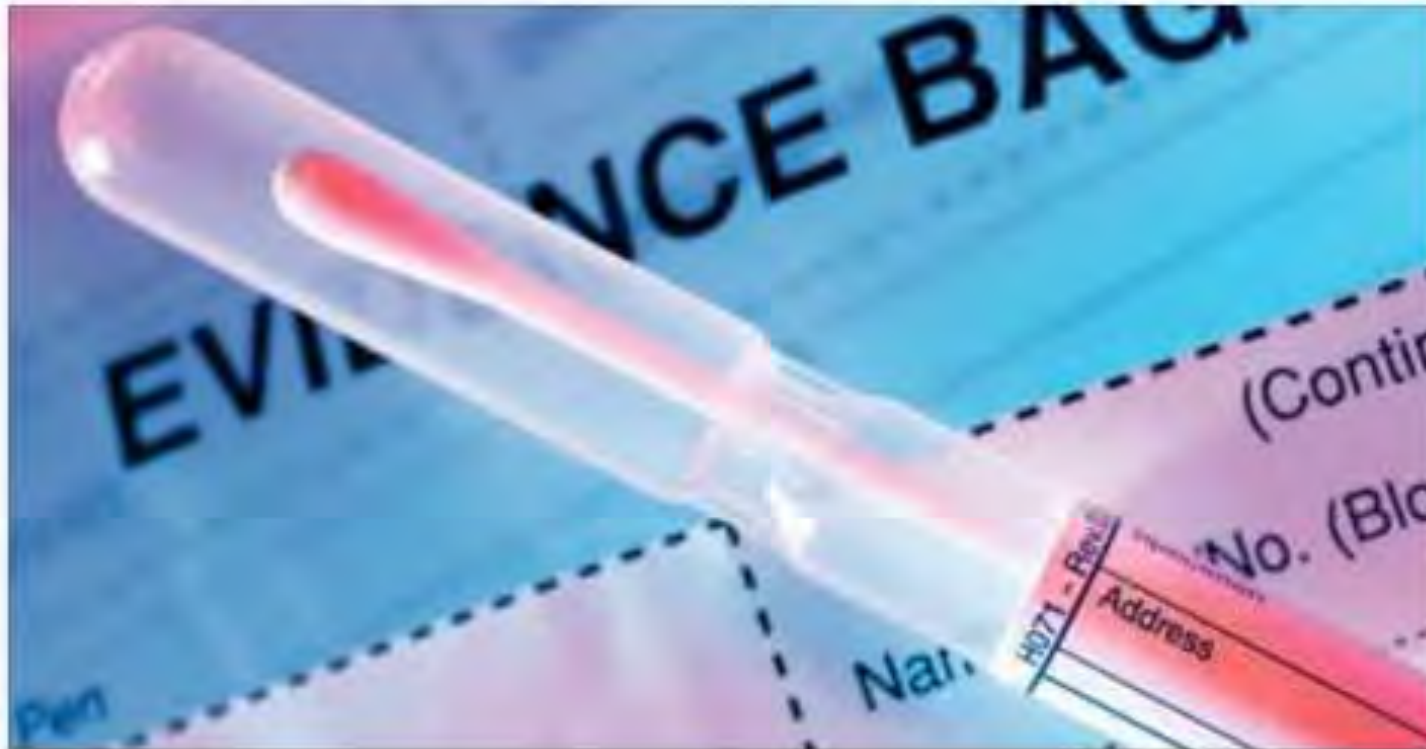
New First Year Electives

- Exciting new first year electives are now available. Those that are not in the area of your major can be counted as broadening electives.
- Opportunity to further sample the breadth of health sciences.

New First Year Electives – Sem 1

NEW elective option: Introduction to Forensic Sciences

Crime scene Investigation, Forensic photography, Digital Forensics, Ballistics, Fingerprinting, Court and police organisational structures and Forensic DNA analysis.



HLTH SC 1000 - Introduction to Forensic Sciences

New First Year Electives – Sem 1

NEW elective: Engaging Adelaide - Knowing your Community

We are only as healthy as the community around us.

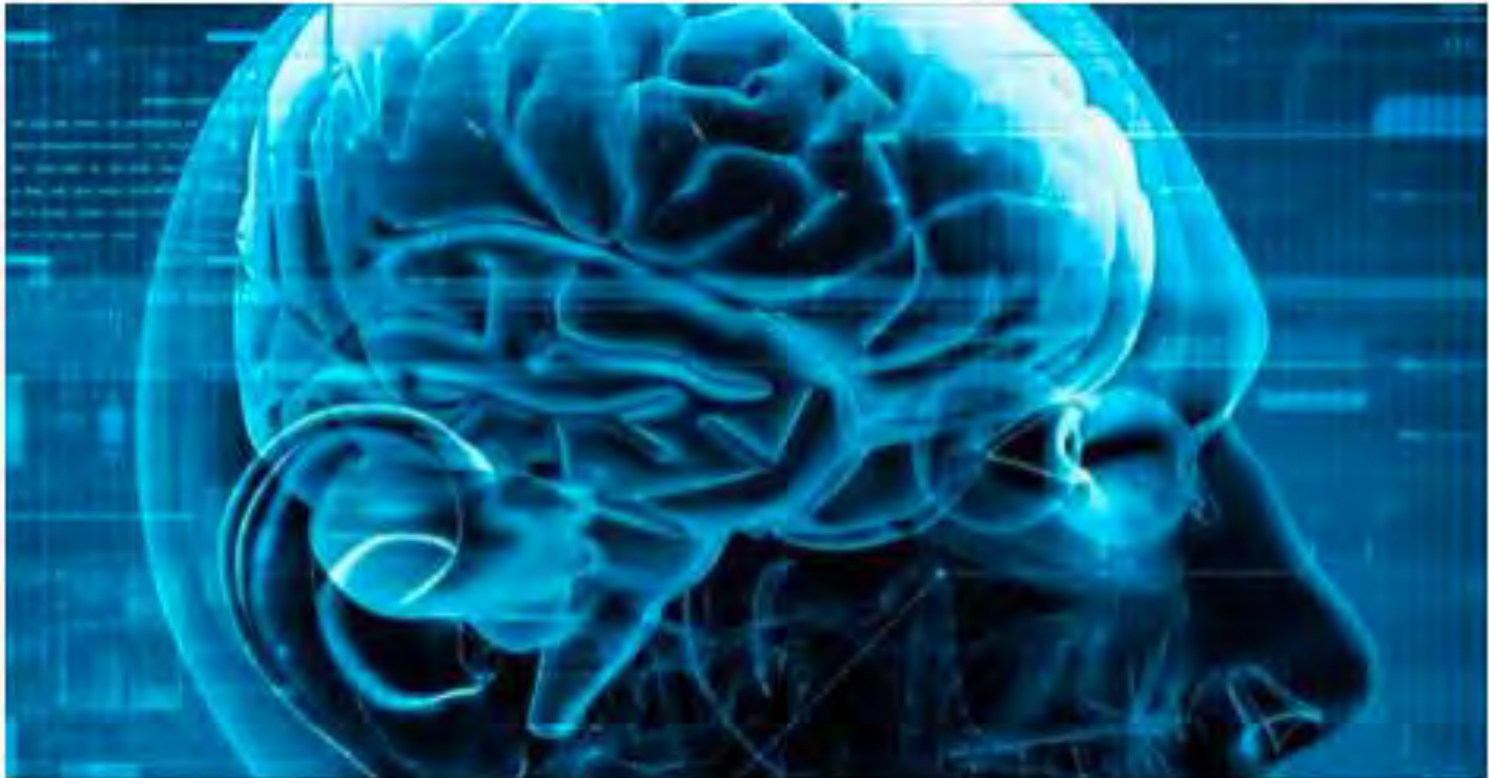
<https://access.adelaide.edu.au/courses/details.asp...>



PUB HLTH 1005 - Engaging Adelaide - Knowing your community

New First Year Electives – Sem 2

New Semester 2 Elective: Essentials in Neuroscience



HLTH SC 1001 - Essentials of Neuroscience

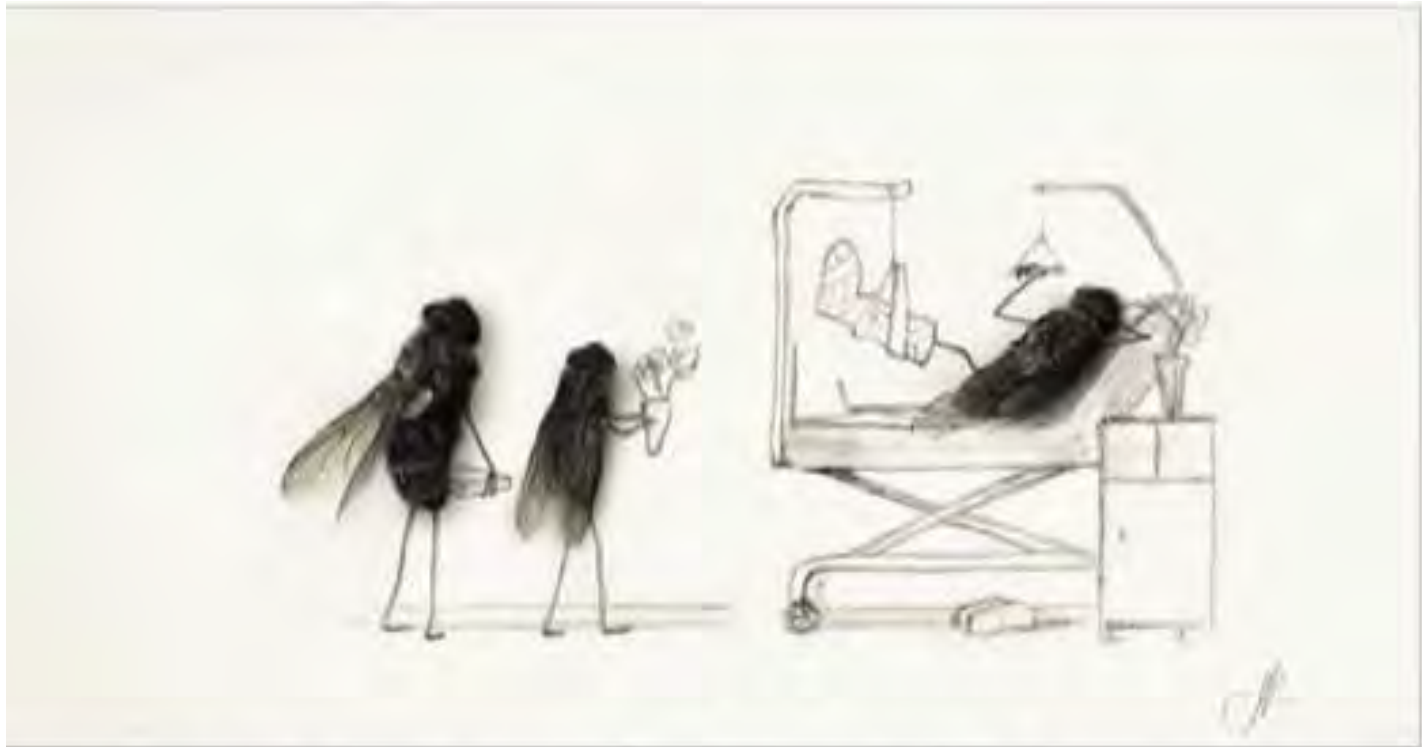
New First Year Electives – Sem 2

New Semester elective: Principles of Human Health and Disease



HLTH SC 1005 - Principles of Human Health and Disease

New First Year Electives – Sem 2



PUB HLTH 1004 - Flies, drains & Ebola: human health & environment

This introductory course will examine a range of environmental hazards and how these can be key determinants of health for individuals and in populations. Through a simulated outbreak, case examples and a field visit, students will explore infectious disease

New First Year Electives – Sem 2



PUB HLTH 1006 - Saving lives or respecting rights? An introduction to health ethics

Should you be able to choose the gender of your baby? Should a doctor ever withhold information from a patient at the family's request? Should the...

[Faculty Home](#)

[About the Faculty](#)

[Degrees/Courses](#)

[Bachelor of Health Sciences](#)

[Bachelor of Health Sciences \(Advanced\)](#)

[Future Students](#)

[Current Students](#)

[Scholarships](#)

[Careers](#)

[Faculty Research](#)

[Learning & Teaching](#)

[Alumni](#)

[Business & Industry](#)

[Medicine, Dentistry &](#)

Bachelor of Health Sciences

Welcome to the Bachelor of Health Sciences degree, and congratulations for considering a career in health sciences.

This degree program will equip you with skills appropriate for lifelong learning and provides a foundation for employment in a range of positions in the health care industry.

[New First Year Students](#)

[Plan Your Program](#)

[Majors](#)

[Careers](#)

[Events & Dates](#)

[FAQs](#)

[Contacts](#)

Bachelor of Health Sciences Commencing Students

One on One Study Advice Sessions

We highly recommend that you book into one of the study advice sessions that are on in the coming weeks

[Make an appointment](#)

If you have any problems booking an appointment please call or email us

Email: b.healthsc@adelaide.edu.au

Phone: 08 8313 2128

Bachelor of Health Sciences Advanced Commencing Students

For Simple Queries about enrolment and study option you can book an appointment using the link [Make an appointment](#)

You are also invited to book a longer study advices session to discuss the Program, your elective options and study plan

SACE Stage 2 Chemistry C+

- Chemistry 1A (Chem 1100) – if not choose Foundations of Chemistry (Chem 1101)
- Molecules, Genes and Cells (Biology 1101) – if not choose Concepts in Biology (Biology 1401)

<http://health.adelaide.edu.au/degrees/bachelor-health-sciences/>



Bachelor of Health Sciences Handbook 2016

©2015 PRODES.COM

adelaide.edu.au

seekLIGHT

Other questions?

- Call us on 8313 2128
- Email b.healthsc@adelaide.edu.au
- Appointments for enrolment advice or study plans via GoBookings
- Course related questions are directed to your course coordinators
- Program coordinators and advisors can help you with study plans, credit transfers and managing your progress.

Keeping on track?

- Watch out for information on the MyUni BHIthSc and BHIthSc(Adv) courses.
- Faculty of Health Sciences and Bachelor of Health Sciences Facebook sites
- Bridging course
- Looking for guidance: Peer mentoring
- 0 week introductory lecture Monday 22nd Feb

BIOLOGY

Bridging Course **2016**

Enrolling in 1st year of the Bachelor of Health Science program
and not studied *SACE Stage 1&2 Biology*? **DON'T PANIC!!**

Register for the Biology Bridging Course!!

When: 15th-19th Feb (week before O'Week)

Where: University of Adelaide, North Terrace Campus

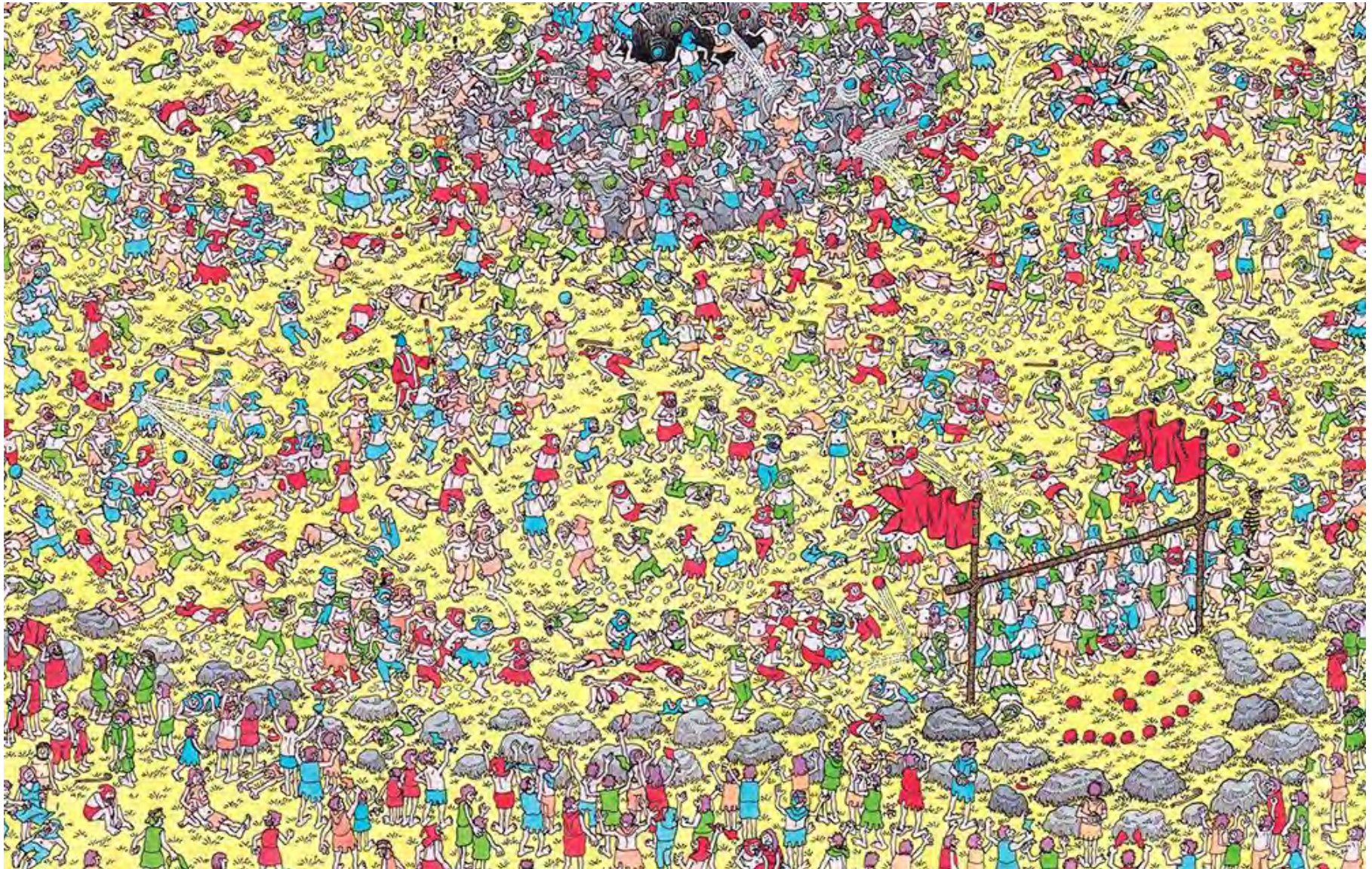
Cost: \$100 per person

Please contact biologycourse@adelaide.edu.au for details

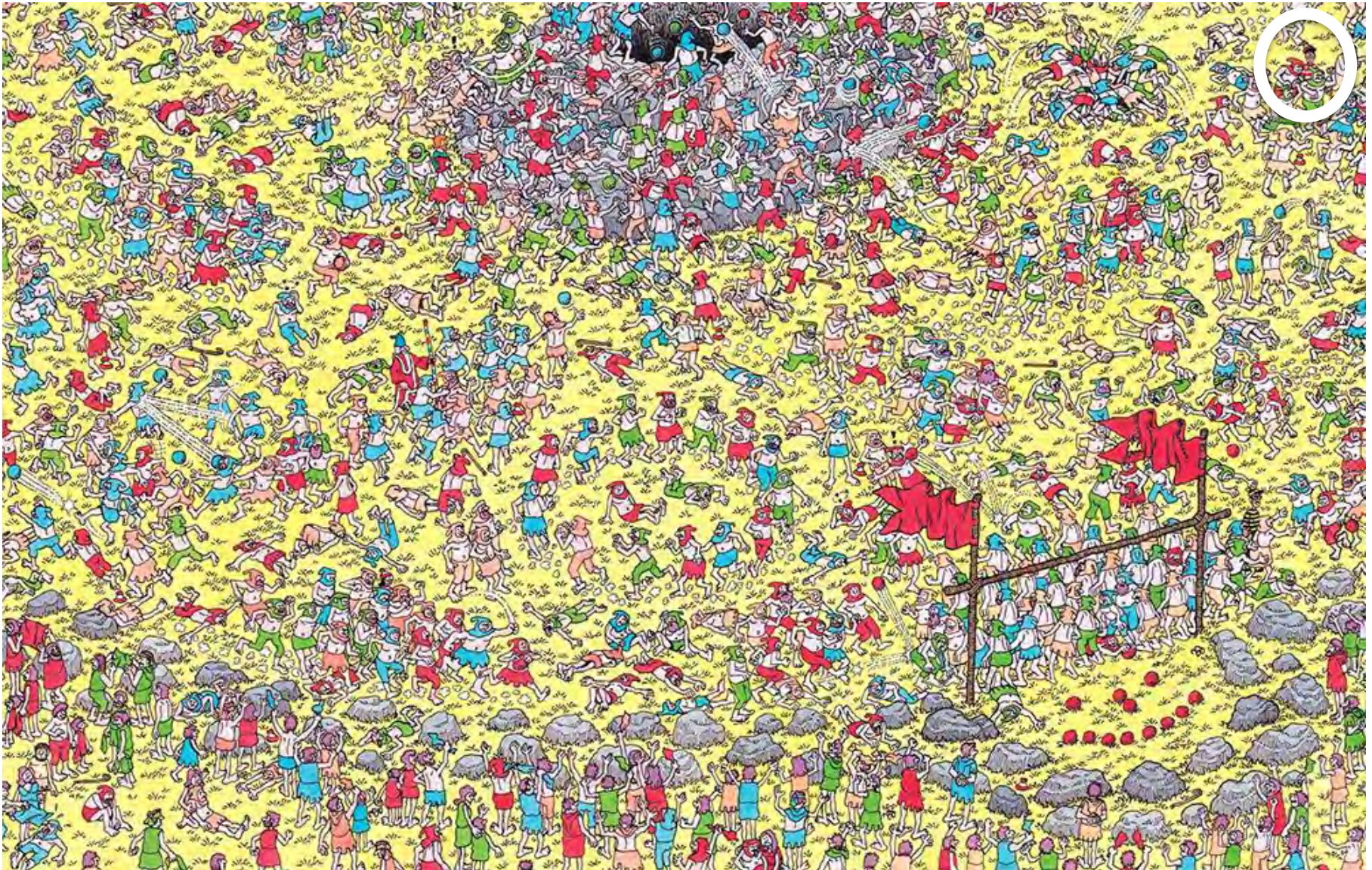
Course Timetable

	MONDAY 15th	TUESDAY 16th	WEDNESDAY 17th	THURSDAY 18th	FRIDAY 19th
09:30 – 11:00	Course overview Introduction to the University (EB/RT)	Energy & metabolism (EB) Movement across membranes (EB)	Nervous System (RT)	Respiratory Physiology (FC)	Integumentary, Musculoskeletal & Immune Systems (TC)
11:00 – 11:30	BREAK	BREAK	BREAK	BREAK	BREAK
11:30 – 12:30	A focus on homeostasis (EB)	Introduction to tissue types (RT)	Endocrine (EB)	Digestive System (EB)	Control systems & feedback (EB)
12:30 – 13:30	LUNCH	LUNCH	LUNCH	LUNCH	LUNCH
13:30 – 15:00	Cells, organelles & biomolecules (RT)	Cellular communication (EB)	Cardiovascular System (RT)	Renal System (FC)	Key skills in biology research (EB) Course wrap-up (RT & EB)

Don't feel like you are lost in the crowd?



Peer mentors are here to fix that





GUIDE **FACULTY OF HEALTH SCIENCES** **PEER**
INSPIRE MENTORING
INFLUENCE PROGRAM

How does it work?

Our trained peer mentors are current students and know from experience the nerves and excitement that come with starting university. They will lead your peer mentor group to help you find your feet and settle into uni life.

Through your peer mentor group you will be given the opportunity to:

- ask questions
- develop a network of supportive peers
- meet new people and establish friendships
- increase your awareness of student support services
- improve your teamwork skills
- gain a sense of belonging at university
- understand the expectations and requirements of life as a university student

You may select a group that meets face to face or you may prefer to be involved online. The choice is yours!

<https://health.adelaide.edu.au/current-students/peer-mentoring/>

